



54th International Fireball Australian Championship



Saturday 28th December 2019 - Friday 3rd January 2020

SAILING INSTRUCTIONS

Organising Authority

Wangi RSL Amateur Sailing Club (WASC)

in conjunction with

International Fireball Association of Australia, and
International Fireball Association of New South Wales

1. RULES

- 1.1. The championship will be governed by the Rules as defined in 'The Racing Rules of Sailing' (RRS).
- 1.2. Australian Sailing (AS) Prescriptions and Special Regulations Part 2 for 'Off the Beach Boats' shall apply.
- 1.3. The International Fireball Association Class Rules shall apply, except any rule changed by the Notice of Race or these Sailing Instructions.
- 1.4. The notation '[DP]' after a Rule in the SIs means that the penalty for a breach of that rule may, at the discretion of the jury, be less than disqualification.
- 1.5. Class Rule 8 PROHIBITIONS is changed that competing boats and competitors may carry personal cameras to capture stills or film footage for the purpose of sport, class and personal promotion. Such cameras must be affixed in a way that they cannot become dislodged while racing and must not be mounted in a position that may create a danger to other boats, competitors or race committee.
- 1.6. Class Rule 23 LIMITATIONS OF EQUIPMENT shall apply.
- 1.7. Class Rule 25 PROPULSION shall apply.
- 1.8. Where there is a conflict between the Notice of Race and the Sailing instructions the Sailing Instructions shall prevail.

2. NOTICES TO COMPETITORS

Notices to competitors will be posted on the Official Notice Board located downstairs in the club near the Canteen.

3. CHANGES TO SAILING INSTRUCTIONS

Any change to the sailing instructions will be posted at least two hours prior to the warning signal of the first race it will take effect, except that any change to the schedule of races will be posted by 1800 hours on the day before it will take effect. This changes RRS Appendix S 3.1.



4. SIGNALS MADE ASHORE

- 4.1. Signals made ashore will be displayed from the flagpole on the waterfront in front of the clubhouse.
- 4.2. When flag AP is displayed ashore, '1 minute' is replaced with 'not less than 30 minutes' in the race signal AP. This changes RRS Appendix S 4.2.

5. SCHEDULE OF EVENTS

5.1.

Day	Date	Program	Time / Warning Signal
1	Sat, 28th December 2019	Registration/Measurement Welcome BBQ	1000 - 1600 hours 1830 hours
2	Sun, 29th December 2019	Registration/Measurement Competitor Information Session Practice Race (one loop) Championship Racing	By appointment only 1200 hours 1400 hours ASAP after Practice Race
3	Mon, 30th December 2019	Championship Racing	1400 hours
4	Tue, 31st December 2019	Championship Racing	1400 hours
5	Wed, 1st January 2020	Reserve Day	TBA
6	Thu, 2nd January 2020	Championship Racing	1400 hours
7	Fri, 3rd January 2020	Championship Racing Presentation Dinner	1100 hours 1900 hours

- 5.2. Up to ten championship races are scheduled.
- 5.3. There will be no more than three races sailed on one day.
- 5.4. If a 'series' has not been achieved by the completion of day four of the championship then, at the discretion of the Organising Authority, the Reserve Day may be used for championship racing.
- 5.5. The Race Committee may adjust the scheduled time of racing if the regatta is behind schedule or the weather forecast may be restrictive to achieving a full series. Any change of schedule will be posted before 1800 hours on the day proceeding the day on which it will take effect.
- 5.6. No warning signal will be made after 1400 hours on the last scheduled day of racing.

6. CLASS FLAGS

The Class flag will be the International Fireball Class Flag, which is square with a red disc centered on a blue background. If for any reason the Class flag cannot be used then International Numeral Pennant 8 may be used.

7. RACING AREA

Racing will be conducted on Lake Macquarie in the area between Wangi Point, Coal Point and Fishing Point as displayed in Attachment A.



8. COURSES

- 8.1. The diagram in Attachment B shows the course including the approximate angles between legs, the order in which marks are to be passed, and the side on which each mark is to be left.
- 8.2. The course configuration is a loop, triangle, loop, with all marks left to port.
- 8.3. No later than the warning signal, the race committee signal boat may display the approximate compass bearing of the first mark. Any failure to display this will not be grounds for redress. This changes RRS 60.1(b) and 62.

9. MARKS

- 9.1. Marks A, B and C will be yellow inflatable cylindrical marks.
- 9.2. New mark, as provided by RRS Appendix S 10, will be a blue inflatable conical mark.
- 9.3. The starting mark will be a red stick mark with an orange flag.
- 9.4. The finishing mark will be a lime green stick mark with a blue flag.

10. OBSTRUCTIONS

The shoreline and moored boats will be designated as obstructions. Competitors are not allowed to sail within 30 metres of moored boats in accordance with WASC Aquatic Licence

11. THE START

- 11.1 Races will be started as per RRS Rule 26 with a 5 minute warning signal.
- 11.2 The starting line will be between a staff displaying an Orange flag on the Race Committee boat at the Starboard end of the start line the pin end starting mark.
- 11.3 A boat starting later than 10 minutes after her starting signal will be scored 'Did Not Start' without a hearing. This changes Rules 35 and A4.

12. THE FINISH

The finishing line will be between a staff displaying an orange flag on the Race Committee boat and the finish mark.

13. PENALTY SYSTEM

RRS 44.1 and 44.2 shall apply.

14. TIME LIMITS AND TARGET TIMES

- 14.1. The target time for the first boat to sail the course shall be 45 minutes. Failure to meet the target time will not be grounds for redress. This changes RRS 60.1 and 62.
- 14.2. If no boat has passed Mark 1 within 20 minutes from the starting signal the race will be abandoned.
- 14.3 The time limit for the first boat to sail the course shall be 90 minutes.
- 14.4. Boats still racing and failing to finish within 15 minutes after the first boat sails the course and finishes will be scored points equal to the number of boats finishing within the time limit plus 30% of the number of starters rounded to the nearest whole number, but no more points than the number of starters. Such boats will be scored Time Limit Expired (TLE). This changes RRS 35, A4.2 and A5.



15. PROTESTS AND REQUESTS FOR REDRESS

- 15.1. Protest forms are available at the race office, located Upstairs in the WASC Clubhouse
- 15.2. Protests and requests for redress or reopening shall be delivered there within the appropriate time limit.
- 15.3. The protest time limit is 60 minutes after the last boat has finished the last race of the day.
- 15.4. Notices will be posted no later than 30 minutes after the protest time limit to inform competitors of the time and location of hearings in which they are parties or named as witnesses.
- 15.5. Breaches of instructions 19, 20, 23 and 24 will not be grounds for a protest by a boat. This changes Rule 60.1(a). Penalties for these breaches may be less than disqualification if the protest committee so decides. The scoring abbreviation for a discretionary penalty imposed under this instruction will be DPI.
- 15.6. On the last scheduled day of racing a request for reopening a hearing shall be delivered:
 - (a) within the protest time limit if the requesting party was informed of the decision on the previous day;
 - (b) no later than 30 minutes after the requesting party was informed of the decision on that day. This changes Rule 66.
- 15.7. On the last scheduled day of racing a request for redress based on a protest committee decision shall be delivered no later than 30 minutes after the decision was posted. This changes Rule 62.2.

16. SCORING

A boats handicap rating will be calculated based on results in the first three championship races.

17. SAFETY REGULATIONS [DP]

- 17.1. A Check-Out and Check-In sheet will be located on a table downstairs near the canteen. The skipper (or crew) of each boat shall check-out by signing this sheet prior to leaving the shore, and check-in by signing this sheet as soon as possible upon returning to shore at the completion of racing, but no later than the protest time limit.
Failure to "Sign On" prior to racing will result in a 5point penalty for the first race of the day.
Failure to "Sign Off" within the required time will result in a 5point penalty for the last race of the day.
- 17.2. Discretionary penalties [DP] will apply to RRS 41 "Outside Help".
- 17.3. A boat that retires from a race shall notify the race committee as soon as possible. [DP]

18. REPLACEMENT OF CREW OR EQUIPMENT [DP]

- 18.1. Substitution of crew will not be allowed without prior written approval of the race committee. The nominated Helm shall not be substituted.
- 18.2. Substitution of equipment will not be allowed without prior written approval of the race committee, unless damaged equipment is replaced on the water, where approval shall be sought before the end of Protest Time Limit for that day.

19. EQUIPMENT AND MEASUREMENT CHECKS

- 19.1. All competing boats and equipment must be presented on day 1 during the advertised times or day 2 by appointment for equipment approval and random measurement inspections.
- 19.2. A boat or equipment may be inspected at any time for compliance with the class rules and sailing Instructions. On the water, a boat can be instructed by a race committee equipment inspector or measurer to proceed immediately to a designated area for inspection. [DP]

20. EVENT ADVERTISING

- 20.1. Advertising will be in accordance with ISAF Regulation 20.
- 20.2. Boats may be required to display advertising supplied by the organising authority.



21. OFFICIAL BOATS

Official boats will display a WASC Burgee.

22. SUPPORT BOATS [DP]

- 22.1. Team leaders, coaches and other support personnel shall stay outside areas where boats are racing from the time of the preparatory signal until all boats have finished or retired or the race committee signals a postponement, general recall or abandonment.
- 22.2. All support and coach boats shall position themselves at least 100 meters below the start line and beyond the lay-lines of the race course whilst racing is in progress, and shall move in such a fashion as to ensure their wake does not affect the boats racing.
- 22.3. In emergency situations, all support and coach boats may be called upon and come under the direction of the race committee.

23. TRASH DISPOSAL

Trash may be placed aboard support and race committee boats.

24. RADIO COMMUNICATION [DP]

Except in an emergency, a boat shall neither make radio transmissions while racing nor receive radio communications not available to all boats. This restriction also applies to mobile telephones or any other electronic communication devices.

25. PRIZES

- 25.1. Regatta age is the competitor's age on the first day of regatta registration.
- 25.2. Prizes will be awarded as described in the Notice of Race.
- 25.3. Other prizes may be awarded at the discretion of the Organising Authority.
- 25.4. Winners of championship trophies are precluded from winning handicap prizes.

26. DISCLAIMER OF LIABILITY

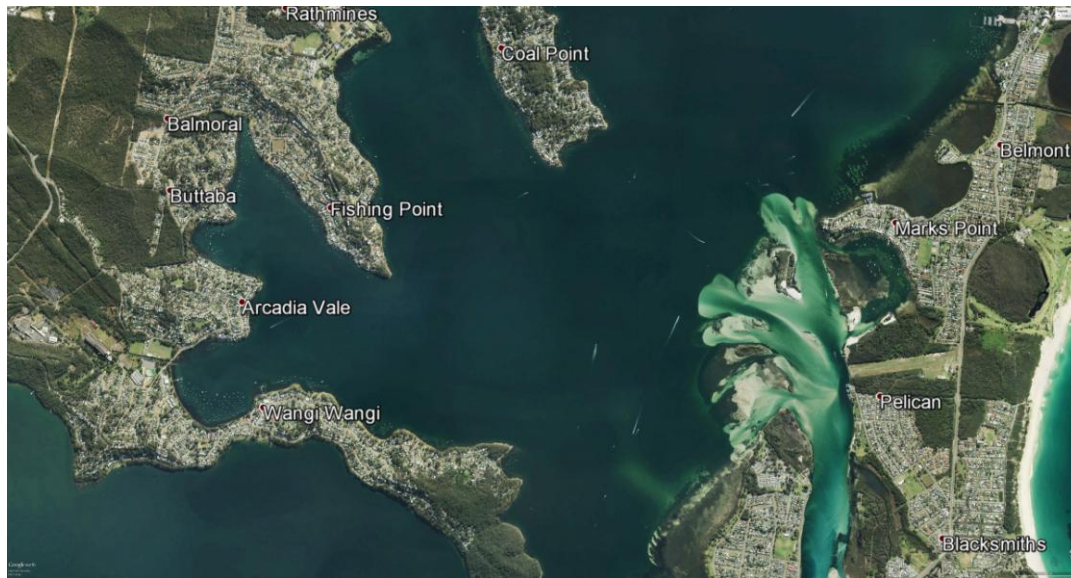
- 26.1. Competitors participate in the regatta entirely at their own risk. See Rule 4, Decision to Race.
- 26.2. The organising authority will not accept any liability for material damage or personal injury or death sustained in conjunction with or prior to, during, or after the regatta.

27. INSURANCE

Each participating boat shall be insured with valid third-party liability insurance with a minimum cover of AUD5Mil (AUD10Mil recommended) or the equivalent. All owners/competitors who enter this event are deemed to have made a declaration that they hold such cover.



ATTACHMENT A - RACING AREA



ATTACHMENT B - COURSE DIAGRAM

Start - A - C - A - B - C - A - C - Finish
Course angles are approximate.

